

DOT

DOT 75
BLACK



DOT 75
WHITE



DOT 100
BLACK



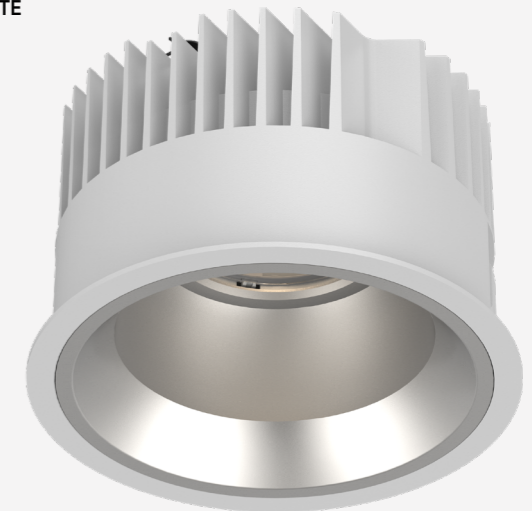
DOT 100
WHITE



DOT 150
BLACK

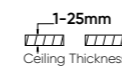
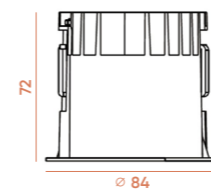


DOT 150
WHITE



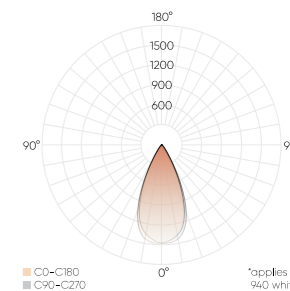


DOT 75

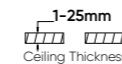
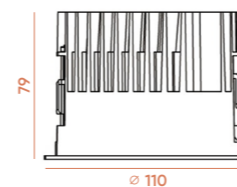


Beam angle 50°
Weight 0,28 kg

2700K black = 650 lm (200 mA / 34 V)
2700K white = 720 lm (200 mA / 34 V)
3000K black = 720 lm (200 mA / 34 V)
3000K white = 800 lm (200 mA / 34 V)
4000K black = 750 lm (200 mA / 34 V)
4000K white = 830 lm (200 mA / 34 V)

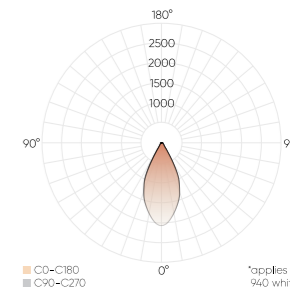


DOT 100

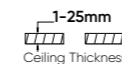
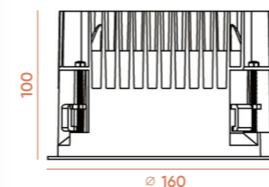


Beam angle 50°
Weight 0,42 kg

2700K black = 1220 lm (400 mA / 34 V)
2700K white = 1370 lm (400 mA / 34 V)
3000K black = 1360 lm (400 mA / 34 V)
3000K white = 1520 lm (400 mA / 34 V)
4000K black = 1450 lm (400 mA / 34 V)
4000K white = 1580 lm (400 mA / 34 V)

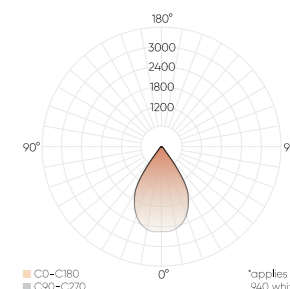


DOT 150



Beam angle 65°
Weight 0,85 kg

2700K black = 2070 lm (700 mA / 35 V)
2700K white = 2250 lm (700 mA / 35 V)
3000K black = 2300 lm (700 mA / 35 V)
3000K white = 2500 lm (700 mA / 35 V)
4000K black = 2400 lm (700 mA / 35 V)
4000K white = 2600 lm (700 mA / 35 V)



Code ordering (luminaire only)

DOT100-15W-930-B

Product family	Type	Colour rendering index	Colour temperature	Surfaced finish
DOT DOT	75 - 8W Small	9 CRI>90	27 2700K	W White
	100 - 15W Medium		30 3000K	B Black
	150 - 27W Large		40 4000K	* Custom

+ add. accessories (drivers)

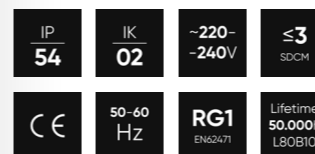
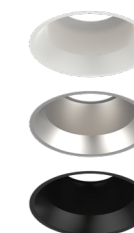
DOT100-nonDIM-Driver-G2

Product family	Type	Accessory
DOT DOT	75 Small	nonDIM-Driver-G2 nonDIM Driver G2
	100 Medium	DALI-Driver-G2 DALI/TouchDIM Driver G2
	150 Large	

+ add. accessories (reflectors)

DOT100-REF-white

Product family	Type	Accessory
DOT DOT	75 Small	REF-white Reflector White
	100 Medium	REF-silver Reflector Silver
	150 Large	REF-black Reflector Black



THE LIGHT
lighting design & consulting

The manufacturer reserves all rights to make changes in materials and components used in production of lighting fittings.